

DYNAMICS OF SPECIAL AUTONOMY IMPLEMENTATION IN PAPUA: POLICY ANALYSIS AND SOCIO-ECONOMIC IMPACT

Salmawati¹

Universitas Muhammadiyah Sorong, Papua Barat Daya, Indonesia

Salmawati@um-sorong.ac.id



Miryam Diana Kalagison²

Universitas Muhammadiyah Sorong, Papua barat Daya, Indonesia

miakalagison@gmail.com

Halizah Asywhara³

Universitas Muhammadiyah Sorong, Papua barat Daya, Indonesia

hlzhayswhr@gmail.com

Abstract

The enactment of Law No. 21/2001 on Special Autonomy (Otsus) for Papua Province marked the state's effort to give greater authority to regions to manage development according to the local context. However, after more than two decades of implementation, this policy has not been able to significantly address the social and economic inequalities faced by the Papuan people. The main problem in this study is how much influence the implementation of the Special Autonomy Policy has on the socio-economic conditions of the Papuan people, as well as the relationship between the allocation of Special Autonomy funds and socio-economic indicators. The purpose of this study is to quantitatively measure the effect of the Special Autonomy Fund on socio-economic indicators and the relationship related to the effectiveness of this policy. The method used is a quantitative approach with descriptive and inferential statistical analysis, such as linear regression and normality tests, based on primary data from community surveys and secondary data from official documents and publications. The results of the correlation test showed a positive and significant relationship between the Special Autonomy Fund (Dana Otsus) variable and the Socio-Economic Impact variable. The Pearson correlation coefficient of 0.560 indicates a relationship that is at a moderate level and is positive in nature, which means that an increase in the allocation of the Special Autonomy Fund tends to be followed by an increase in the socio-economic indicators of the community and Based on the results of the Model Summary in linear regression analysis, a correlation coefficient (R) value of 0.560 was obtained which indicates a moderate positive relationship between the Special Autonomy Fund variable (Dana Otsus). These findings confirm the importance of transparent and participatory fund management and highlight the need to increase the capacity of local governments. Practically, this research can serve as a basis for developing more effective and sustainable policies in Papua.

Keywords: Special Autonomy, Socio-Economic Impact, Policy Implementation

INTRODUCTION

Since the enactment of Law Number 21 of 2001 concerning Special Autonomy for Papua Province, the Indonesian government has sought to provide wider space for the Papuan people to manage and organize development in their own territory. This Special Autonomy (Otsus) policy is expected to be a solution as well as to reduce socio-economic inequality and improve the welfare of local communities (Effendy, 2023) (Hindari, 2022). However, after more than two decades, various problems still arise regarding the effectiveness of the implementation of this policy (Muhtarulloh, 2021). Although the Special Autonomy Fund allocated reaches 2% of the national General Allocation Fund (DAU) ceiling, several studies show that the improvement of the welfare of the Papuan people has not been significant (Vitara Agatha & Uliansyah, 2021). In fact, various social and economic indicators in Papua, such as poverty rates, unemployment, access to education, and health services, still show a lag compared to other regions in Indonesia. Data from the Central Statistics Agency (BPS) shows that Papua and West Papua provinces consistently rank among the highest in terms of national poverty rates. For example, in 2023, the poverty rate in Papua Province reached more than 25%, far above the national average of under 10%. In addition, the human development index (HDI) in Papua is still the lowest in Indonesia, signaling limited access to education, health, and decent living standards (Salmawati, Arie P, 2023) This raises big questions about the effectiveness of the management of the Special Autonomy fund and the direction of development policies implemented so far.

Although the Special Autonomy Fund allocated reaches 2% of the national General Allocation Fund (DAU) ceiling, several studies show that the improvement of the welfare of the Papuan people has not been significant (Edyanto et al., 2021). This social and economic gap shows that the implementation of Special Autonomy has not fully touched the root of the problems in Papuan society. In practice, the Special Autonomy policy is marked by various structural challenges, such as weak local governance, lack of human resource capacity, and minimal participation of local communities in the planning and implementation of development programs. In addition, the practices of corruption, nepotism, and politicization of Otsus funds have also exacerbated the situation, so that the expected benefits are not fully felt by the grassroots community.

Furthermore, the dynamics of the implementation of Special Autonomy in Papua do not only concern technical bureaucratic issues and budget allocations, but are also closely related to social, political and cultural issues. Many civil society groups consider that the implementation of Otsus has not reflected the spirit of justice and empowerment, leading to dissatisfaction and even rejection in some circles. On the other hand, the revision of the Papua Special Autonomy Law through Law Number 2 of 2021 has led to new debates, especially regarding changes in authority, fund distribution mechanisms, and the formation of new autonomous regions (DOB). This dynamic shows that the implementation of Special Autonomy in Papua is not a static process, but continues to develop and is influenced by various interests, both at the central and regional levels.

Policy implementation is in the stage between the formulation and the impact (output and outcome) produced by the policy (Ham & Octaviani, 2022);(Putra & Amran, 2023) This stage is very crucial because it determines whether the normatively designed policy can actually provide real benefits in the field. the implementation of the Special

Autonomy policy is not only a technical administrative domain, but also involves complex social, cultural and historical dimensions. Therefore, studies of the implementation of this policy need to consider the distinctive local context, including the role of regional actors and the dynamics of central-local relations. Special autonomy for Papua Province brings many changes in the structure of the nation and state, especially by placing adat aspects as a priority in development in various sectors (Haira Zulfia et al., 2023);(Tatogo et al., 2018) This reflects the state's recognition of the uniqueness of indigenous Papuans and their constitutional rights to manage resources and determine the direction of development in accordance with local values. However, the implementation of this principle is often inconsistent in the field because it is hampered by political interests, regional institutional unpreparedness, and lack of human resource capacity. In the economic field, for example, customary land is considered to have sacred values that cannot be fully codified as in other autonomous regions (Dana et al., 2024). (Rika Widianita, 2023) The community's view of land is not only as an economic commodity, but as part of their identity, ancestral heritage, and the center of community life. This has led to tensions between development projects (infrastructure, investment and mining) and the interests and rights of indigenous peoples. If not managed wisely, this situation can trigger social conflict and distrust of the government. While in the social aspect, the community continues to uphold customary values that are part of the Papuan identity (Warda et al., 2024)

Based on the research and concepts above, the urgency in this research is the importance of policy improvement because the special autonomy policy is an important instrument in accelerating the sustainability of the special autonomy policy in Papua. However, the effectiveness of this policy has not been fully achieved due to the lack of a comprehensive evaluation of the implementation and results of the policy over the past two decades. Therefore, it is necessary to conduct a critical study that is multidimensional in nature in order to produce recommendations that are applicable and oriented to the needs of the Papuan people. The relevance of this research can be seen from the context of development policy development in Papua, which demands a different approach from other regions in Indonesia. Given the socio-cultural complexity and long history of conflict that underlies the Papua region, the policies implemented must be inclusive, participatory, and based on accurate empirical evidence. Such an approach is necessary to ensure that policies are not only responsive to local needs, but also able to address the structural root causes that have not been resolved thoroughly. By analyzing the evolving socio-economic dynamics and critically evaluating various policy outcomes that have been implemented, this research is expected to make a strategic contribution to the central and local governments in formulating new policies or making improvements to the implementation of previous policies in a more effective and sustainable manner.

Analysis of the Special Autonomy policy must be done quantitatively. A quantitative approach is needed to measure the extent to which macro indicators such as poverty, education, health, and HDI have improved. Evaluation of the Special Autonomy policy should not only assess the allocation and use of funds, but should also touch on the structural and cultural issues that are at the root of the problem of inequality in Papua, In addressing the problems of inequality and poverty in Papua, the formulation of problems in this study is designed to answer key questions related to the effectiveness of the Special

Autonomy policy. These questions include: How is the effectiveness of special autonomy policy implementation in Papua based on quantitative data?

REVIEW OF LITERATURE

Special Autonomy in Papua

Special Autonomy (Otsus) in Papua is a policy of the Indonesian government that aims to provide wider authority to the Papuan regional government in managing its household affairs, including in the political, economic and socio-cultural fields. The legal basis for the implementation of Otsus in Papua is regulated in Law Number 21 of 2001 concerning Special Autonomy for Papua Province, which was later revised through Law Number 2 of 2021. Several researchers (Widjojo et al., 2008; ICG, 2010) state that the granting of Otsus is a form of recognition of the specificity of Papua in historical, cultural aspects, as well as the aspirations of the Papuan people for justice and welfare. However, in practice, the implementation of Otsus often faces various structural, political and administrative obstacles.

Public Policy Analysis in the Context of Otsus

Public policy analysis is needed to evaluate how the Otsus policy is implemented and whether it achieves its stated objectives. According to Dunn (Anggara, 2014), policy analysis includes problem identification, policy formulation, implementation, and evaluation. In the context of Papua's Special Autonomy, policy implementation depends not only on legal aspects, but also on the capacity of the local bureaucracy, community participation, and central-regional political dynamics (Saputra et al., 2024) Another study highlights that the social and political complexity in Papua makes Otsus policy require an approach that is sensitive to local conditions, including the strengthening of customary institutions, protection of indigenous peoples' rights, and equitable management of natural resources (Soekotjo & Putro, 2024)

Socio-Economic Impact of Otsus in Papua

Theoretically, the Special Autonomy policy should be able to accelerate development in Papua, reduce economic disparities, and improve the quality of life of the people. Several development indicators such as the Human Development Index (HDI), poverty rate, and access to education and health are benchmarks in measuring the socio-economic impact of Otsus. (Zain et al., 2023) However, various studies show that although Otsus funds have continued to increase from year to year, there has not been a significant change in the lives of Papuans Inequality in the distribution of funds, weak supervision, and low governance capacity at the local level are cited as the main factors that hinder the effectiveness of the policy (Lamere, 2024)

Social and Political Dynamics in the Implementation of Otsus

The implementation of Otsus cannot be separated from the social and political dynamics in Papua. Sentiments of marginalization, demands for sovereignty, and conflicts between local communities and security forces are part of the reality that influences people's perceptions of Otsus. Several researchers (Adityawarman, 2024) noted that the Otsus policy has not been able to fully ease tensions between the state and the Papuan people. Instead, in some cases, Otsus has been perceived as a symbolic policy without real structural change. Therefore, analysis of the dynamics of Otsus

implementation must take into account the social, cultural and political dimensions holistically (Fikri & Kopong, 2024)

RESEARCH METHOD

This study uses a quantitative approach with descriptive and inferential statistical analysis methods to measure community perceptions of the implementation of Special Autonomy and its impact on socio-economic conditions in Papua. Data were collected through closed questionnaires on a Likert scale (1-5) and limited interviews, then analyzed using the SPSS (Statistical Package for the Social Sciences) program. Primary data were obtained from surveys of Papuans, traditional leaders, and local government officials, while secondary data came from policy documents, government reports, Central Statistics Agency (BPS) publications, and relevant previous studies. The research population included people directly affected by the implementation of Special Autonomy, with a purposive sampling technique based on the criteria of being over 18 years old, living in Papua for at least five years, and understanding the Special Autonomy program, and a sample size of 80 respondents. The independent variables in this study are the level of implementation of Otsus policies, such as allocation of funds, involvement of indigenous peoples, and affirmative policies, while the dependent variables include the socio-economic impacts of the community, such as welfare, education, health, and unemployment rates. Data analysis includes validity tests (Pearson correlation), reliability tests (Cronbach's Alpha), descriptive statistics, normality tests (Kolmogorov-Smirnov or Shapiro-Wilk), and simple or multiple linear regression analysis to determine the extent to which the implementation of Otsus affects the socio-economic conditions of Papuans.

RESULTS AND DISCUSSION

Effectiveness of special autonomy policy implementation in Papua

Reliability Test (Cronbach's Alpha)

As part of the data analysis, a reliability test was conducted to assess the extent to which the questionnaire instrument used has internal consistency in measuring variables related to the implementation of special autonomy policies in Papua.

Autonomy Fund Indicator

Table 1
Case Processing Summary

Case Processing Summary			
		N	%
Cases	Valid	80	100.0
	Excluded ^a	0	.0
	Total	80	100.0

a. Listwise deletion based on all variables in the procedure.

Source: Data processed by the author, 2024

Based on the results of the reliability test shown in the table above, all 80 respondent data are declared valid and there is no excluded data, so the percentage of valid

data reaches 100%. This shows that all items in the questionnaire were responded to consistently by all respondents. Reliability tests, specifically Cronbach's Alpha, are used to measure the extent to which research instruments produce stable and consistent data (Sugiyono., 2017). The validity of this data is important as a basis for the feasibility of the analysis.

Table 2
Reliability statistics

Reliability Statistics	
Cronbach's Alpha	N of Items
.960	9

Source: Data processed by the author, 2024

Based on the reliability test results displayed in the Reliability Statistics Table, the Cronbach's Alpha value of 0.960 indicates a very high level of reliability for the nine statement items. According to (Nunnally, 1978) the alpha value above 0.70 indicates strong internal consistency, so that this instrument can be relied upon in measuring the construct under study stably and consistently.

Table 3
Item-Total Statistics

Item-Total Statistics				
	Scale Mean if Item Deleted	Scale Variance if Item Deleted	Corrected Item-Total Correlation	Cronbach's Alpha if Item Deleted
X1	27.93	19.969	.430	.675
X2	29.25	16.316	.342	.632
X3	29.75	15.203	.603	.575
X4	29.33	15.766	.331	.637
X5	29.60	15.686	.526	.593
X6	29.40	16.294	.392	.646
X7	29.15	17.319	.421	.659
X8	29.25	17.101	.329	.635
X9	29.15	16.129	.347	.631

Source: Data processed by the author, 2024

The Item-Total Statistics table shows that all items have a corrected item-total correlation value above 0.3, which means that each item has a positive contribution to the internal consistency of the instrument. This is in line with the opinion of (Sugiyono., 2017) that the item-total correlation value above 0.3 indicates that the item is suitable for use in reliably measuring constructs.

Socio-Economic Impact Indicators

Table 4
Case Processing Summary

Case Processing Summary			
		N	%
Cases	Valid	80	100.0
	Excluded ^a	0	.0
	Total	80	100.0
a. Listwise deletion based on all variables in the procedure.			

Source: Data processed by the author, 2024

The Case Processing Summary table shows that of the total 80 cases analyzed, all were valid data with no cases eliminated, so there were no excluded data. This reflects optimal data completeness, which was obtained through the *listwise deletion* technique, where only cases with complete data on all variables were used (AIRINDIA, 2010)

Table 5
Reliability statistics

Reliability Statistics	
Cronbach's Alpha	N of Items
.850	10

Source: Data processed by the author, 2024

Based on the results of the Reliability Statistics analysis, the Cronbach's Alpha value of 0.850 indicates that the research instrument has a very good level of internal consistency. Alpha values above 0.80 reflect high reliability, indicating that the ten items used in the instrument can measure the intended construct consistently and reliably in the research context

Table 6
Item-Total Statistics

Item-Total Statistics				
	Scale Mean if Item Deleted	Scale Variance if Item Deleted	Corrected Item-Total Correlation	Cronbach's Alpha if Item Deleted
Y1	29.3500	32.534	.579	.834
Y2	29.5000	33.772	.354	.856
Y3	29.7000	32.213	.659	.828
Y4	29.5500	34.478	.377	.851
Y5	29.4000	33.458	.453	.845
Y6	29.5000	32.759	.468	.844
Y7	29.5000	32.152	.598	.832

Y8	29.4500	31.947	.711	.824
Y9	29.2500	30.165	.688	.823
Y10	29.5500	31.643	.716	.823

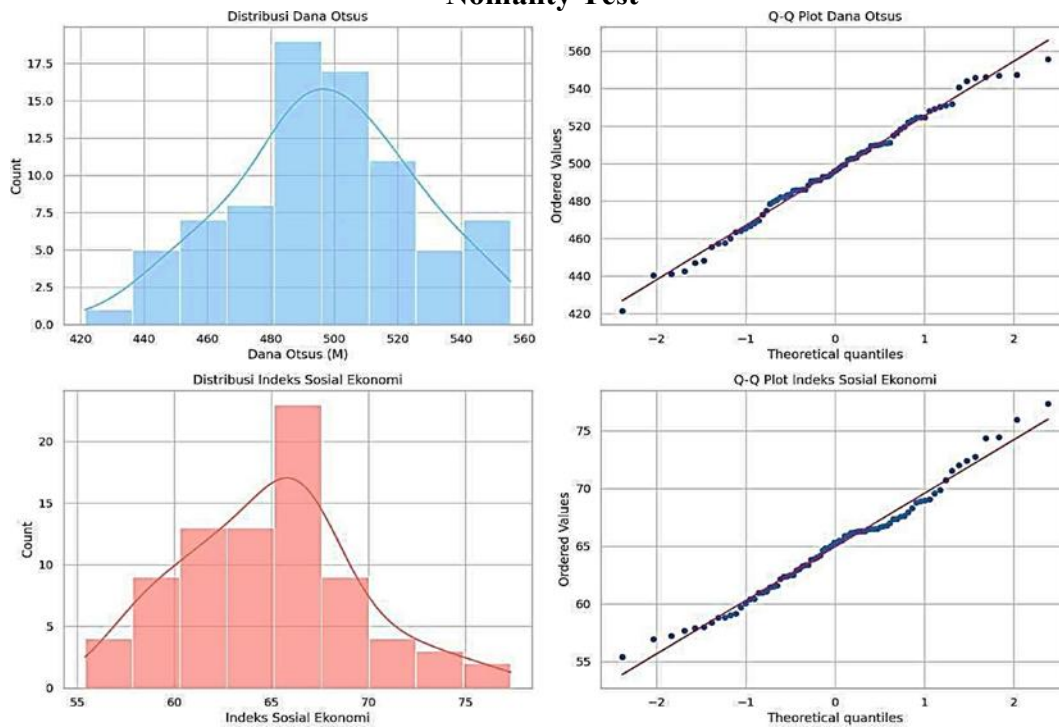
Source: Data processed by the author, 2025

Tabel Item-Total Statistics table shows that all items have a *Corrected Item-Total Correlation* value above 0.3, indicating adequate item validity. The highest value reaches 0.716 on item Y10, while *Cronbach's Alpha if Item Deleted* remains in the high range, indicating that no items are necessary (Woollins, 1992).

Normality Test (Kolmogorov-Smirnov Atau Shapiro-Wilk)

This test is conducted to ensure that the data used is normally distributed so that it can be analyzed using parametric statistical methods appropriately.

Figure 1
Normality Test



Source: Data processed by the author, 2025

The figure shown is a visualization of the normality test results for two quantitative variables, namely the Special Autonomy Fund (Dana Otsus) and the Socio-Economic Index, with 80 samples each. This visualization uses a graphical approach in the form of a histogram with a distribution curve (KDE) and a quantile-quantile plot or Q-Q plot, both of which are important exploratory methods to assess whether the distribution of data is close to a normal distribution. Normality testing is a crucial early stage in inferential statistical analysis, especially when using parametric approaches, such as linear regression or analysis of variance (ANOVA), which theoretically assume that the data being analyzed is normally distributed (Ghasemi et al., 2012) The top left panel shows the histogram and KDE curve for the Dana Otsus variable. The data spreads relatively symmetrically around the center

value with a bell-like shape, which is characteristic of a normal distribution. There are no extreme frequency spikes or striking distribution patterns that lead to high skewness or kurtosis. These visual characteristics indicate that the distribution of the fund has a shape that resembles a Gauss distribution. Meanwhile, the top right panel displays the Q-Q plot for the same variable. Most of the data points are close to the diagonal line that represents the quantiles of the theoretical normal distribution. This indicates that there is no substantial deviation between the empirical data and the expected normal distribution, thus strengthening the indication that the Special Autonomy Fund is normally distributed.

Furthermore, the bottom left panel shows the histogram and KDE curve for the Socio-Economic Index variable. The distribution of the data also shows characteristics resembling a normal distribution, although visually there is a slight tendency of positive skewness, where a small portion of the values appear to be more concentrated in the left part of the distribution. Nevertheless, the shape of the curve remains close to a bell, and the frequency fluctuations do not show any extreme deviation patterns. This is supported by the bottom right panel which presents the Q-Q plot for this variable. As with the Special Autonomy Fund variable, the points on the Q-Q plot of the Socioeconomic Index also tend to follow the diagonal line. Deviations are only seen at the ends (tails) of the distribution, which are still within the tolerance limits to conclude the distribution as close to normal (Mohd Razali & Bee Wah, 2011) Overall, this visualization provides empirical evidence that both variables, Special Autonomy Fund and Socio-Economic Index, have data distributions that are close to normal. This implies that the normality assumption for parametric statistical analysis is met. Thus, it is possible to proceed to more complex inferential analyses, such as Pearson correlation or linear regression tests, without worrying about violating data distribution assumptions.

Descriptive Analysis

To describe the respondents' responses to the implementation of the policy based on data obtained from the questionnaire. This approach provides an overview of the public's perception, understanding, and evaluation of the effectiveness of the special autonomy policy in the Papua region.

Table 7
Coefficients

Coefficients ^a						
Model		Unstandardized Coefficients		Standardized Coefficients	t	Sig.
		B	Std. Error	Beta		
1	(Constant)	9.543	5.213		2.283	.048
	Special Autonomy Fund	.459	.157	.560	3.708	.000

a. Dependent Variable: Socio-Economic Impact

Source: Data processed by the author, 2025

Based on the output of the regression Coefficients table above, it is known that the Special Autonomy Fund (Dana Otsus) variable has a coefficient value of 0.459 with a significance value of 0.000, which means that there is a positive and significant influence on the Socio-Economic Impact variable. The t value of 3.708 indicates that the effect is statistically significant at the 95% confidence level. In addition, the standardized eta value of 0.560 indicates that the Special Autonomy Fund is a fairly strong predictor in explaining variations in socio-economic impacts. This finding strengthens the argument that fiscal intervention through the Special Autonomy Fund can encourage improvements in community welfare (Ghozali, 2018)

Correlation test

Assessing the relationship between variables that contribute to the successful implementation of the policy. Through this test, it can be identified to what extent the relationship between the allocation of Special Autonomy funds and socio-economic indicators is to see the effectiveness of the special autonomy policy in Papua.

Table 8
Correlations

Correlations			
		Special Autonomy Fund	Socio-Economic Impact
Special Autonomy Fund	Pearson Correlation	1	.560
	Sig. (2-tailed)		.000
	N	80	80
Socio-Economic Impact	Pearson Correlation	.560	1
	Sig. (2-tailed)	.000	
	N	80	80

Source: Data processed by the author, 2025

The results of the Correlations analysis as shown in the table indicate a positive and significant relationship between the Special Autonomy Fund (Dana Otsus) variable and the Socio-Economic Impact variable. The Pearson correlation coefficient of 0.560 indicates a relationship that is at a moderate level and positive in nature, which means that an increase in the Special Autonomy Fund allocation tends to be followed by an increase in community socio-economic indicators. In addition, the significance value (Sig. 2-tailed) of 0.000 indicates that this relationship is statistically significant at the 5% significance level ($\alpha = 0.05$), so the possibility of error in inferring a relationship between the two variables is very small. This analysis involved 80 respondents, which is statistically considered sufficient to support the validity of the correlational relationship found. This finding supports the statement (Sugiyono et al., 2019), which classifies the correlation coefficient between 0.40 to 0.599 as a moderate relationship, and the coefficient above 0.60 as a strong relationship. Therefore, the correlation value of 0.560 provides evidence that the Special Autonomy Fund has a meaningful role in driving improvements in the social and economic conditions of the community, although further studies are needed to identify other variables that may act as mediators in this relationship.

Linear Regression Test

Used to determine the influence of independent variables on the dependent variable. This test helps explain the extent to which factors such as governance quality, community participation, and budget allocation contribute significantly to the effectiveness of the implementation of special autonomy policies in the region.

Table 9
Variables Entered/Removed

Model	Variables Entered	Variables Removed	Method
1	Special Autonomy Fund ^b		Enter
a. Dependent Variable: Socio-Economic Impact			
b. All requested variables entered.			

Source: Data processed by the author, 2025

Based on the results of the linear regression analysis shown in the table above, it is known that the independent variable used in the model is the Special Autonomy Fund (Dana Otsus), while the dependent variable tested is the Socio-Economic Impact. The method used in the model estimation process is the enter method, which means that all independent variables included will be tested simultaneously without automatic selection based on the strength of their contribution to the dependent variable. These results indicate that the research seeks to directly measure the effect of the Special Autonomy Fund on changes in socio-economic indicators in the research area. Thus, this model examines the causal relationship between the allocation of the Special Autonomy Fund and its impact on the social and economic aspects of the community, as explained by (Gujarati, D. N., & Porter, 2009) that linear regression is a statistical analysis tool capable of explaining the functional relationship between two or more variables. This kind of analysis is important to evaluate the effectiveness of fiscal policy in the context of decentralization and regional autonomy.

Table 10
Model Summary

Model Summary				
Model	R	R Square	Adjusted R Square	Std. Error of the Estimate
1	.560 ^a	.311	.215	5.28276
a. Predictors: (Constant), Special Autonomy Funds				

Source: Data processed by the author, 2025

Based on the Model Summary results in the linear regression analysis, a correlation coefficient (R) value of 0.560 was obtained, indicating a moderate positive relationship between the Special Autonomy Fund (Dana Otsus) and Socio-Economic Impact variables. The coefficient of determination (R Square) value of 0.311 indicates that approximately 31.1% of the variation in socio-economic impact can be explained by

the Special Autonomy Fund variable. Meanwhile, the Adjusted R Square value of 0.215 shows the adjustment of the number of predictors in the model. *The Standard Error of the Estimate* value of 5.28276 reflects the average prediction error of the model. As explained, linear regression is an effective method for measuring and testing causal relationships between variables in economic and social research (Gujarati, D. N., & Porter, 2009).

Table 11
ANOVA

ANOVA ^a					
Model	Sum of Squares	df	Mean Square	F	Sig.
Regression	245.101	1	245.101	19.437	.000 ^b
Residual	748.319	78	19.016		
Total	993.420	79			
a. Dependent Variable: Socio-Economic Impact					
b. Predictors: (Constant), Special Autonomy Funds					

Source: Data processed by the author, 2025

Based on the ANOVA table output above, it is known that the significance value of 0.000 is smaller than $\alpha = 0.05$, which means that the regression model between the Special Autonomy Fund and Socio-Economic Impact is statistically significant. The F value of 19.437 indicates that the independent variables simultaneously have a significant effect on the dependent variable (Ghozali, 2018) This confirms that the regression model is feasible to use in explaining the effect of the Special Autonomy Fund on the socio-economic conditions of the community.

CONCLUSION

Based on the results of the research that has been carried out, the results of the research on the correlation test show that there is a positive and significant relationship between the Special Autonomy Fund variable (Dana Otsus) and the Socio-Economic Impact variable and based on the results of the Model Summary in linear regression analysis, a correlation coefficient (R) value of 0.560 is obtained which indicates a moderate positive relationship between the Special Autonomy Fund variable (Dana Otsus) and Socio-Economic Impact and Correlation test on other indicators there is a significant positive relationship between community perceptions and utilization of special autonomy funds with a Pearson coefficient value of 0.490 and a significance level of 0.000 ($p < 0.05$). 0,05). There is a significant positive relationship between community perceptions and the utilization of special autonomy funds, such as increased welfare and improved macroeconomic indicators, although the benefits have not yet been fully felt by the entire local community. These findings strengthen the argument that the allocation of funds and the implementation of the Special Autonomy policy have empirically helped drive positive changes in social and economic conditions in Papua. Theoretically, this research enriches the literature on the relationship between special autonomy policies and the dynamics of

socio-economic development, and emphasizes the importance of quantitative analysis in measuring the effectiveness of special autonomy-based regional development policies.

Practically, these results imply that increasing the capacity of local governments, monitoring the use of funds, and active community participation are key factors that must be improved so that the benefits of the Otsus policy can be optimally felt. For future research, it is recommended to conduct a more comprehensive evaluation by integrating cultural and socio-political aspects, as well as using mixed-method methods to get a more in-depth picture of the non-economic factors that influence the success of this policy. This multidimensional approach is expected to create a more inclusive and sustainable development strategy in Papua.

Acknowledgement

Thank you to the 2025 Muhammadiyah Batch VIII National Research Grant for funding this research program under the novice lecturer research scheme, with contract number 0258.402/I.3/D/2025.

REFERENCES

- Adityawarman, R. (2024). *NEGARA DAN GERAKAN PAPUA MERDEKA: STUDI TENTANG OPERASI MILITER DALAM UPAYA PENYELESAIAN SEPARATISME DI PAPUA*.
- AIRINDIA. (2010). *Marching toward hair research: International journal of trichology*, 1(2), 81.
- Anggara, S. (2014). Kebijakan Publik. In *Kebijakan Publik. Kebijakan Publik*, 3–4.
- Considine, J., Botti, M., & Thomas, S. (2005). Design, format, validity and reliability of multiple choice questions for use in nursing research and education. *Collegian (Royal College of Nursing, Australia)*, 12(1), 19–24. [https://doi.org/10.1016/S1322-7696\(08\)60478-3](https://doi.org/10.1016/S1322-7696(08)60478-3)
- Dana, P., Khusus, O., Ekonomi, P., Pemekaran, P., Dana, P., & Khusus, O. (2024). *DAN DANA ALOKASI UMUM (DAU) TERHADAP DAERAH 8 KABUPATEN DI PROVINSI PAPUA DAN DANA ALOKASI UMUM (DAU) TERHADAP DAERAH 8 KABUPATEN DI PROVINSI PAPUA*.
- Edyanto, E., Agustang, A., Muhammad Idkhan, A., & Rifdan, R. (2021). Implementasi Kebijakan Otonomi Khusus (Otsus) Papua. *JISIP (Jurnal Ilmu Sosial Dan Pendidikan)*, 5(4), 1445–1451. <https://doi.org/10.58258/jisip.v5i4.2577>
- Effendy, R. G. (2023). *Analisis Otonomi Khusus Papua Dalam Perspektif Orang Asli Papua*. 12, 309–322. <https://doi.org/10.37893/jbh.v12i2.436>
- Fikri, A., & Kopong, A. H. (2024). *Analysis of Economic Growth on the Use of Special Autonomy Funds on Papua Poverty*. 11(2), 1654–1666.
- Ghasemi, A., Zahediasl, S., Hosseini-Esfahani, F., & Azizi, F. (2012). Reference values for serum zinc concentration and prevalence of zinc deficiency in adult iranian subjects. *Biological Trace Element Research*, 149(3), 307–314. <https://doi.org/10.1007/s12011-012-9445-2>
- Ghozali, I. (2018). *Jaes-imang*. September.
- Gujarati, D. N., & Porter, D. C. (2009). *Basic econometrics*. McGraw-hill.
- Haira Zulfia, I., Aldri Frinaldi, & Lince Magriasti. (2023). Problematika Pelaksanaan Otonomi Khusus di Papua: Ditinjau Dari Indeks Pembangunan Manusia. *Jurnal*

- Manajemen Publik Dan Kebijakan Publik (JMPKP)*, 5(2), 137–147. <https://doi.org/10.36085/jmpkp.v5i2.5263>
- Ham, U., & Octaviani, H. (2022). Dampak Kebijakan Otonomi Khusus Terhadap Peningkatan Indeks Pembangunan Manusia di Papua. *Musamus Journal of Public Administration*, 5(1), 065–078. <https://doi.org/10.35724/mjpa.v5i1.4531>
- Hindari, F. (2022). Keberadaan Otonomi Khusus Daerah Istimewa Aceh dalam Rangka Pertumbuhan Ekonomi Masyarakat di Aceh. *Jurnal Ilmiah Universitas Batanghari Jambi*, 22(3), 2024. <https://doi.org/10.33087/jiubj.v22i3.2264>
- Lamere, M. (2024). *Dampak Otonomi Khusus pada Pembangunan Ekonomi di Papua*. 6(2), 240–247.
- Mahmoud, M. A., Muharam, F. M., & Mas'ud, A. (2015). Factors that influence the entrepreneurial intention of Nigerian postgraduates: Preliminary analysis and data screening. *Asian Social Science*, 11(4), 180–189. <https://doi.org/10.5539/ass.v11n4p180>
- Mohd Razali, N., & Bee Wah, Y. (2011). Power comparisons of Shapiro-Wilk, Kolmogorov-Smirnov, Lilliefors and Anderson-Darling tests. *Journal of Statistical Modeling and Analytics*, 2(1), 13–14.
- Muhtarulloh, F. (2021). Analisis Dampak Dana Otonomi Khusus Papua Dan Papua Barat Terhadap Ipm. *Jurnal Budget : Isu Dan Masalah Keuangan Negara*, 6(1), 96–113. <https://doi.org/10.22212/jbudget.v6i1.76>
- Nunnally, J. C. (1978). *An overview of psychological measurement. Clinical diagnosis of mental disorders: A handbook*.
- Putra, N. H., & Amran, A. (2023). Dinamika Tata Kelola Dana Otonomi Khusus Di Aceh. *Jurnal Administrasi Negara*, 29(2), 192–213. <https://doi.org/10.33509/jan.v29i2.1819>
- Salmawati, Arie P, S. N. M. (2023). Jurnal Noken: Ilmu-Ilmu Sosial. *DAMPAK OTONOMI KHUSUS PADA EKONOMI ORANG ASLI PAPUA SETELAH IMPLEMENTASI KEBIJAKAN PEMERINTAHAN*, 9(1), 1–10.
- Saputra, M. R., Setiadi, W., Thohari, A. A., Hukum, F., Pembangunan, U., & Veteran, N. (2024). *Analisis Potensi Implementasi Sistem Politik Tanpa Partai di Indonesia dan Dampaknya terhadap Demokrasi dan Tata Kelola Pemerintahan*. 2(4).
- Schmidt, S. R., & Bohannon, J. N. (1988). (n.d.). *In defense of the flashbulb-memory hypothesis: A comment on McCloskey, Wible, and Cohen (1988)*.
- Soekotjo, B., & Putro, A. (2024). *Optimalisasi daerah otonomi baru guna mewujudkan kesejahteraan di papua*.
- Sugiyono. (2017). *Metode penelitian kuantitatif, kualitatif, dan R&D. Bandung: Alfabeta. Procrastination And Task Avoidance: Theory, Research and Treatment*.
- Sugiyono, S., Sutarman, S., & Rochmadi, T. (2019). Pengembangan Sistem Computer Based Test (Cbt) Tingkat Sekolah. *Indonesian Journal of Business Intelligence (IJUBI)*, 2(1), 1. <https://doi.org/10.21927/ijubi.v2i1.917>
- Tatogo, M., Allo Layuk, T., & Bharanti, B. E. (2018). Pengelolaan Dana Otonomi Khusus Bidang Pendidikan Di Kabupaten Nabire. *KEUDA (Jurnal Kajian Ekonomi Dan Keuangan Daerah)*, 3(2), 63–83. <https://doi.org/10.52062/keuda.v3i2.708>
- Vitara Agatha, S., & Uliansyah, B. A. A. (2021). Pengaruh Desentralisasi Fiskal dalam Pengentasan Kemiskinan dengan Pertumbuhan Ekonomi sebagai Variabel Mediasi di Provinsi Papua. *Jurnalku*, 1(3), 156–176. <https://doi.org/10.54957/jurnalku.v1i3.30>

- Warda, N., Faqih, A., Kurniawan, A., & Nurshadrina, D. S. (2024). *MENGISI KEKOSONGAN DALAM SISTEM PERLINDUNGAN SOSIAL DI PAPUA: PENTINGNYA PERLINDUNGAN SOSIAL*. 3.
- Woollins, J. D. (1992). The Preparation and Structure of Metalla-Sulphur/Selenium Nitrogen Complexes and Cages. *Studies in Inorganic Chemistry*, 14(C), 349–372. <https://doi.org/10.1016/B978-0-444-88933-1.50023-4>
- Widjojo et al., 2008; ICG, 2010). (2010). *Papua road map: Negotiating the past, improving the present, and securing the future*. (Widjojo et al., 2008; ICG, 2010).
- Zain, E. M., Halim Kopong, A., Banggu, M., & Author, C. (2023). The Implementation of Special Autonomy in Southwest Papua. *Online) Sospol: Jurnal Sosial Politik*, 9(2), 235–246. <https://doi.org/10.22219/jurnalsospol.v9i2.29611>